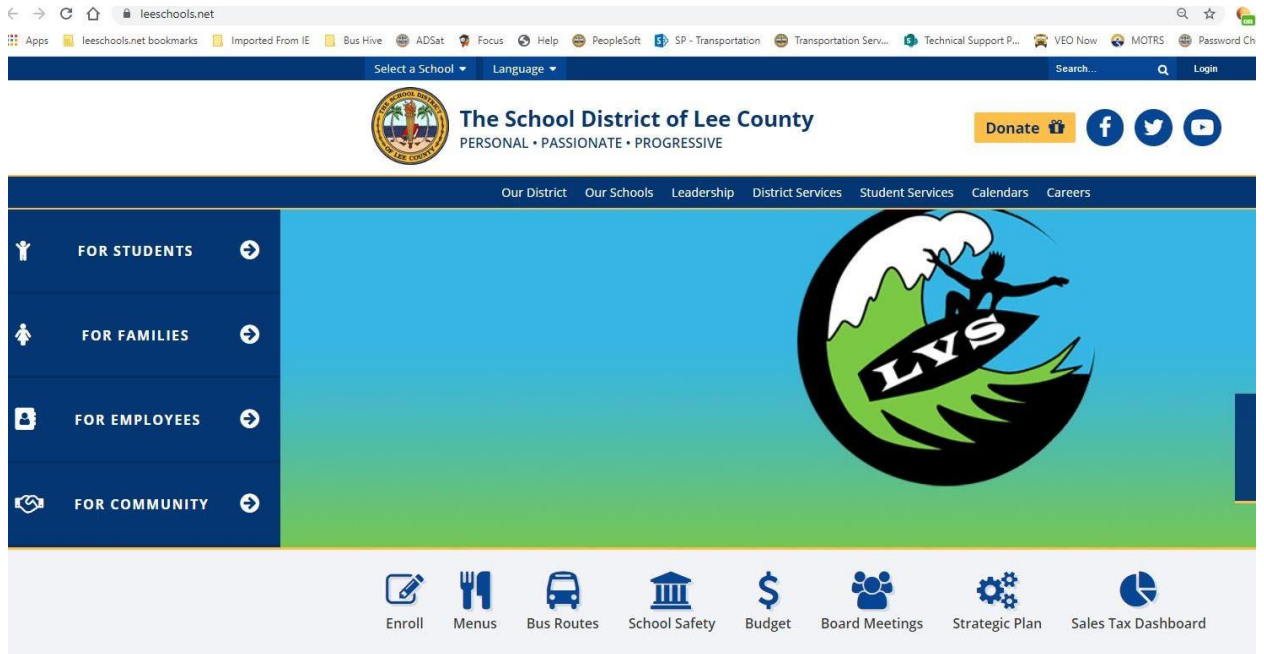


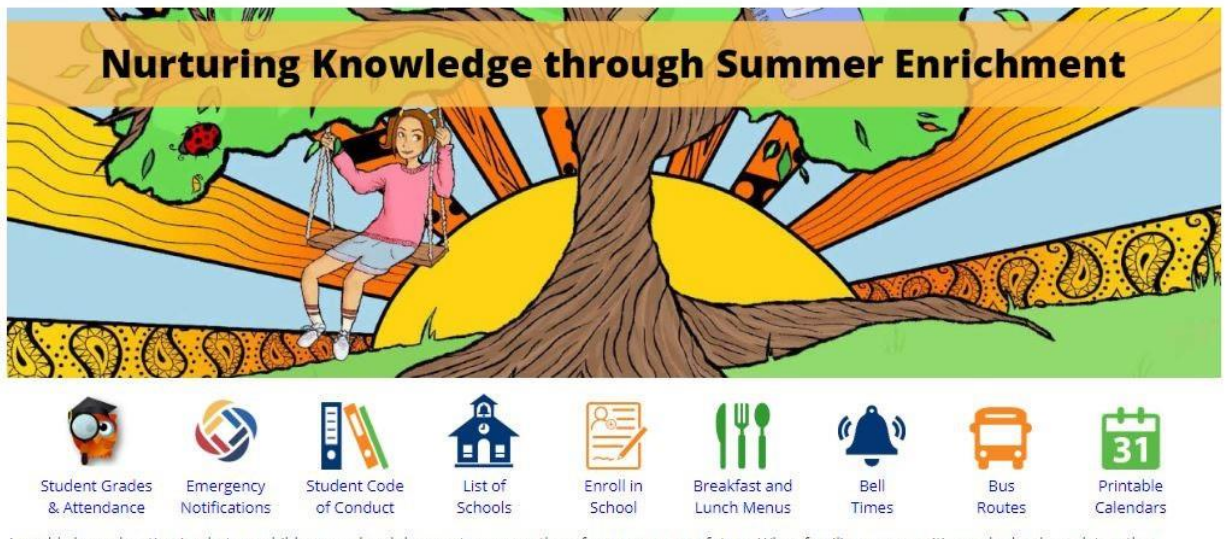
MapnetWeb Aksè pou paran

- Paran yo ka ale sou site Leeschools.net la pou yo genyen enfòmasyon sou li kote bis timoun li a ap kanpe, paran yo ap klike sou imaj ki genyen ti bis la sou, pou .Fanmi yo konnen ke chak Distri Eskolè genyen yon lyen ak wout bis yo.








Parent Portal


Proudly educating over 95,000 students in grades K-12



Full Calendar

Quick Links

-  **BUS ROUTES**
-  **LUNCH MENU**
-  **CODE OF CONDUCT**
-  **STUDENT HANDBOOK**
-  **LAUNCHPAD**

 **peachjar** | flyers

Welcome to Bayshore!

Have a great summer! We miss you, and we can't wait to see you!



Click here for Incoming Kindergarten information!

- Par an yo ka klike sou nenpòt lyen ki genyen wout bis yo



The School District of Lee County
PERSONAL • PASSIONATE • PROGRESSIVE

Donate 



[Our District](#) [Our Schools](#) [Leadership](#) [District Services](#) [Student Services](#) [Calendars](#) [Careers](#)

Transportation Services

Bus Routes

Contact the Transportation Team

Transportation Information

Transportation Review Committee

Two Mile Limit

Where's the Bus

Zones

[Home](#) > [Our District](#) > [Departments](#) > [Operations](#) > [Transportation Services](#) > [Bus Routes](#)

Click Here to Search For Your Bus Stop Information

School Board Policy 7.02, Student Transportation: All students living within the District or who are assigned to a school in accordance with cooperative agreements and who live two (2) miles or more from their assigned schools are eligible for transportation to and from school.

- Par an klike isit`` klike pou ou ka chèche enfòmasyon sou ki kote bis ou ap kanpe``

****SCHOOL YEAR 2020/21 BUS INFORMATION NOW AVAILABLE**

Enter Your Address Below

Address: Street Name:

If your street is not listed please contact the administrator

School:

ACADEMY HIGH
ACCELERATION MIDDLE CHARTER
ALC HIGH
ALC WEST- MID & HIGH
ALLEN PARK ELEMENTARY

Note: Hold the CTRL key to make multiple school selections.

- Paran tape adrès ou epi chèche lekòl pitit ou a